



DRAINAGE PRODUCTS FROM RIYADH FOUNDRY

Our company established in the year 1396 H corresponding to 1976 in the second industrial city of Riyadh , KSA.

Having over 40 years of experience in the industry , we are established as a leading manufacturer in quality assured products.

The success of the company is the support we got from our customers for an on-going commitment to guarantee, quick response, service, range, quality, prices and deliveries.

RainFlow is the brand name of our drainage products like floor drains , cleanouts , roof drains etc. Our products will meet all your needs including indoor and outdoor drainage purposes.

Rainflow products made are developed locally in Saudi Arabia with the intension to meet G C C requirements as these products were importing by different companies in the name of USA brands.

We designed our products to suit our areas; coatings are appropriate with the climate and the packagings are trustworthy enable to transport anywhere.

P.S : The Drainage Flyer is only indicative of our product and detailed catalogue shall be provided on hearing from you.



Parapet Sleeve



Downspout Nozzle

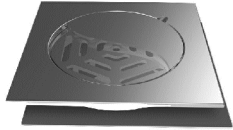


Vent Sleeve



Water Shock Absorber

Floor Drains - FD-400 SERIES



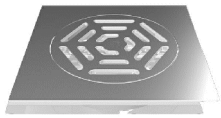
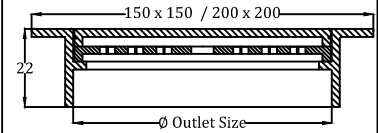
FD-450

MATERIAL

Body Grate & Cover - Brass /
Stainless steel

Dimensions

Model No.	Outlet Size (inch)	Outlet Type	Body Size
FD 450 H ₂	50mm	Hub	150 mm x 150mm
FD 450 H ₃	75mm	Hub	150 mm x 150mm
FD 450 H ₄	110mm	Hub	150 mm x 150mm
FD 450 H ₄	110mm	Hub	200 mm x 200mm



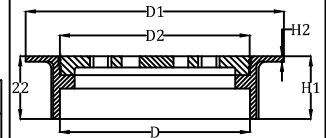
FD-450

MATERIAL

Body & Grate- Brass /
Stainless Steel

Dimensions

Model No.	Outlet Size (mm)	Outlet Type	Body Size	DIMENSIONS IN mm					
FD 450 T H ₁₅	110mm	Hub Type	150 mm x 150mm	Detail	D	D1	D2	H1	H2
FD 450 T H ₂₀	110mm	Hub Type	200 mm x 200mm	mm	110	150	110	20	3



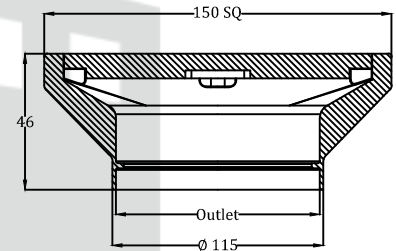
FD-451

MATERIAL

Body & Grate-Nickel Bronze /
Stainless steel

Dimensions

Model No.	Outlet Size (mm)	Outlet Type	Strainer Size	Water Way Area (mm ²)
FD-451 H S ₁₅	110mm	Hub Type	150 mm x 150mm	8345 mm ²



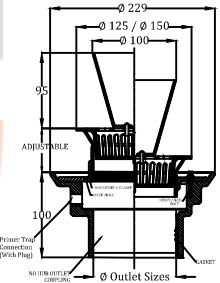
FD-501

MATERIAL

Body - Cast Iron
Strainer - Nickel Bronze

Dimensions

Model No.	Outlet Size (mm)	Strainer Size	Water Way Area
FD 501 F ₂	50	125mm	3020mm ²
FD 501 F ₃	75	150mm	3020mm ²
FD 501 F ₄	110	150mm	3020mm ²



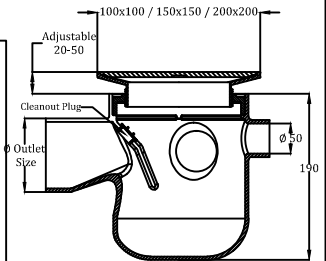
FD-453

MATERIAL

Body - Cast Iron
Strainer - Nickel Bronze

Dimensions

Model No.	Outlet Size		Inlet Size	Outlet and Inlet type	Strainer Size	Water Way Area (mm ²)
	(mm)	(inch)				
FD 453 MI NB ₃	75	3"	2"	No-Hub	100mmX100mm	2400 mm ²
FD 453 MI NB ₄	110	4"	2"	No-Hub	150mmX150mm	8300 mm ²
FD 453 MI NB ₆	160	6"	2"	No-Hub	200mmX200mm	14500 mm ²



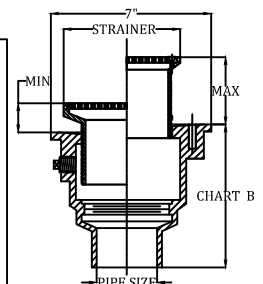
FD-500

MATERIAL

Body - Cast Iron
Strainer - Nickel Bronze

Dimensions

Chart A					Chart B			
Catalogue Number	Outlet Size	Strainer Size		Strainer	Pipe Size	No Hub	Push On	PVS / ABS
FD-500 S ₅	2, 3, 4"	5"x 5"	1-1/2"	2-5/16"	2"	4-3/4"	5-1/2"	4"
FD-500 S ₆	2, 3, 4"	6"x 6"	1-1/2"	2-5/16"				
FD-500 S _{6h}	2, 3, 4"	6"x 6"	1-1/2"	2-5/16"	3"	4-3/4"	5-1/2"	4"
FD-500 S ₈	2, 3, 4"	8"x 8"	1-1/2"	2-3/4"				
FD-500 S _{8h}	2, 3, 4"	8"x 8"	1-1/2"	2-3/4"	4"	4-3/4"	5-1/2"	4"
FD-500 S _{8h}	2, 3, 4"	8"x 8"	1-1/2"	2-3/4"				



Area Drains -

AD-550 SERIES



AD-550

MATERIAL

Body & Collar - Cast Iron

Grate - Ductile iron / Nickel Bronze

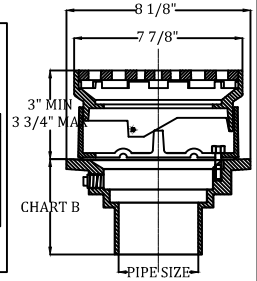
Dimensions

Chart A

Catalogue Number	Outlet Size	Grate Size	Grate
AD-550 D I A R _g	2, 3, 4"	8"	ductile iron
AD-550 A R _g	2, 3, 4"	8"	nickel bronze

Chart B

Pipe Size	No Hub	Push On	Female Thread	Inside Chaulk	PVS / ABS
2"	3-5/8"	3-5/8"	4-1/4"	4-1/4"	2-3/4"
3"	3-5/8"	4"	4-1/4"	4-1/4"	3-5/8"
4"	3-5/8"	4"	4-1/4"	4-1/4"	3-7/8"
6"	3-1/2"	—	—	—	—



AD-550

MATERIAL

Body - Cast Iron

Grate - Ductile iron

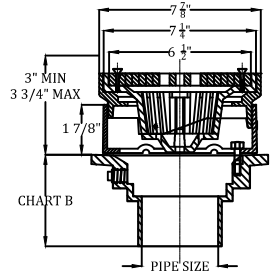
Dimensions

Chart A

Catalogue Number	Outlet Size	Grate Size
AD-550 D I A B R _g	2, 3, 4"	8"

Chart B

Pipe Size	No Hub	Push On	Female Thread	Inside Chaulk	PVS / ABS
2"	3-5/8"	3-5/8"	4-1/4"	4-1/4"	2-3/4"
3"	3-5/8"	4"	4-1/4"	4-1/4"	3-5/8"
4"	3-5/8"	4"	4-1/4"	4-1/4"	3-7/8"
6"	3-1/2"	—	—	—	—



AD-550

MATERIAL

Body & Collar - Cast Iron

Grate - Ductile iron / Nickel Bronze

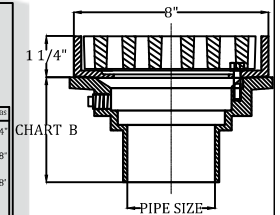
Dimensions

Chart A

Catalogue Number	Outlet Size	Grate Size	Grate
AD-550 D I F R _g	2, 3, 4"	8"	ductile iron
AD-550 F R _g	2, 3, 4"	8"	nickel bronze

Chart B

Pipe Size	No Hub	Push On	Female Thread	Inside Chaulk	PVS / ABS
2"	3-5/8"	3-5/8"	4-1/4"	4-1/4"	2-3/4"
3"	3-5/8"	4"	4-1/4"	4-1/4"	3-5/8"
4"	3-5/8"	4"	4-1/4"	4-1/4"	3-7/8"
6"	3-1/2"	—	—	—	—



AD-550

MATERIAL

Body - Cast Iron

Grate - Ductile iron

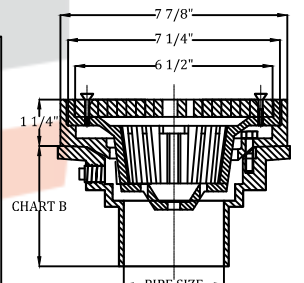
Dimensions

Chart A

Catalogue Number	Outlet Size	Grate Size	Grate
AD-550 D I F B R _g	2, 3, 4"	8"	ductile iron

Chart B

Pipe Size	No Hub	Push On	Female Thread	Inside Chaulk	PVS / ABS
2"	3-5/8"	3-5/8"	4-1/4"	4-1/4"	2-3/4"
3"	3-5/8"	4"	4-1/4"	4-1/4"	3-5/8"
4"	3-5/8"	4"	4-1/4"	4-1/4"	3-7/8"
6"	3-1/2"	—	—	—	—



AD-550

MATERIAL

Body & Collar - Cast Iron

Grate - Ductile iron/Nickel Bronze

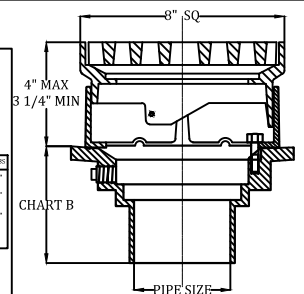
Dimensions

Chart A

Catalogue Number	Outlet Size	Grate Size	Grate
AD-550 D I A S _g	2, 3, 4"	8x8"	ductile iron
AD-550 A S _g	2, 3, 4"	8x8"	nickel bronze

Chart B

Pipe Size	No Hub	Push On	Female Thread	Inside Chaulk	PVS / ABS
2"	3-5/8"	3-5/8"	4-1/4"	4-1/4"	2-3/4"
3"	3-5/8"	4"	4-1/4"	4-1/4"	3-5/8"
4"	3-5/8"	4"	4-1/4"	4-1/4"	3-7/8"
6"	3-1/2"	—	—	—	—



AD-550

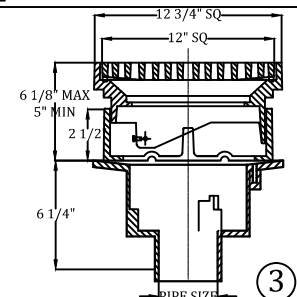
MATERIAL

Body & Collar - Cast Iron

Grate - Ductile iron/Nickel Bronze

Dimensions

Catalogue Number	Outlet Size	Grate Size	Strainer
AD-550 D I A S ₁₂	2, 3, 4, 5, 6, 8"	12" sq.	ductile iron
AD-550 A S ₁₂	2, 3, 4, 5, 6, 8"	12-1/2" sq.	nickel bronze



Area Drains - AD-550 SERIES



AD-550

MATERIAL

Body & Collar - Cast Iron

Grate - Ductile iron / Nickel Bronze

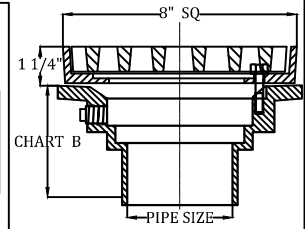
Dimensions

Chart A

Catalogue Number	Outlet Size	Grate Size	Grate
AD-550 F S ₈	2, 3, 4"	8x8"	ductile iron
AD-550 D I F S ₈	2, 3, 4"	8x8"	nickel bronze

Chart B

Pipe Size	No Hub	Flush Out	Female Thread	Male Chisel	PS / ABS
2"	3-5/8"	3-5/8"	4-1/4"	4-1/4"	2-3/4"
3"	3-5/8"	4"	4-1/4"	4-1/4"	3-5/8"
4"	3-5/8"	4"	4-1/4"	4-1/4"	3-7/8"
6"	3-1/2"	—	—	—	—



AD-550

MATERIAL

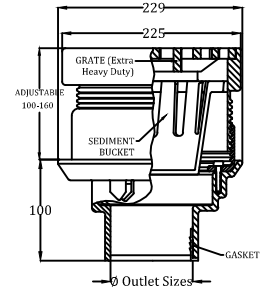
Body & Clamp- Cast Iron

Frame & Bucket- Cast Iron

Grate - Ductile iron / Cast Iron

Dimensions

Model No: -	Outlet Size(mm)	Strainer Size	Water Way Area(mm ²)	Loading Capacity
AD 550 H A B R ₂	50	225mm	17300 mm ²	Heavy Duty
AD 550 H A B R ₃	75	225mm	17300 mm ²	Heavy Duty
AD 550 H A B R ₄	110	225mm	17300 mm ²	Heavy Duty



AD-550

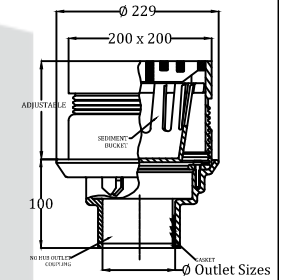
MATERIAL

Body & Collar - Cast Iron

Grate - Ductile iron / Cast Iron

Dimensions

Model No:	Outlet Size(mm)	Grate Size	Water Way Area(mm ²)	Loading Capacity
AD-550 H A B S ₂	50	200x200mm	4500 mm ²	Heavy Duty
AD-550 H A B S ₃	75	200x200mm	4500 mm ²	Heavy Duty
AD-550 H A B S ₄	110	200x200mm	4500 mm ²	Heavy Duty



AD-550

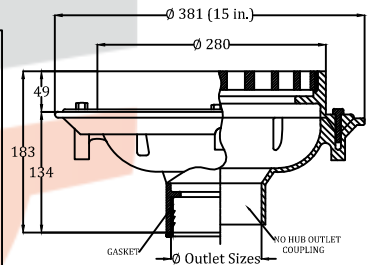
MATERIAL

Body & Clamp - Cast Iron

Grate - Ductile iron / Cast Iron

Dimensions

Model No:	Outlet Size(mm)	Strainer Size	Water Way Area(mm ²)	Loading Capacity
AD 550 H R ₃	75	280mm	23500 mm ²	Heavy Duty
AD 550 H R ₄	110	280mm	23500 mm ²	Heavy Duty
AD 550 H R ₆	160	280mm	23500 mm ²	Heavy Duty



AD-550

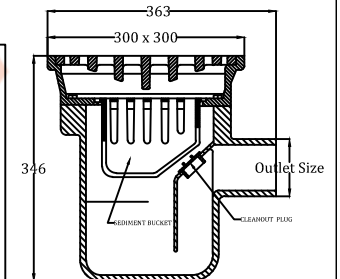
MATERIAL

Body & Frame- Cast Iron

Grate - Ductile iron / Cast Iron

Dimensions

Model No:	Outlet Size(mm)	Strainer Size	Water Way Area(mm ²)	Loading Capacity
AD 550 H P T h ₄	110	300mm	22700 mm ²	Heavy Duty / Extra Heavy Duty
AD 550 H P T h ₆	160	300mm	22700 mm ²	Heavy Duty / Extra Heavy Duty



AD-550

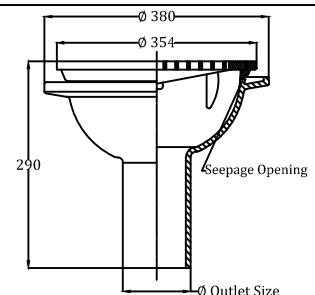
MATERIAL

Body - Cast Iron

Strainer - Cast Iron / Ductile Iron

Dimensions

Model No:	Outlet Size(mm)	Strainer Size	Water Way Area(mm ²)	Loading Capacity
AD 550 H F ₄	110	310mm	22000 mm ²	Heavy Duty



Roof Drains - RD-601 SERIES



RD-601

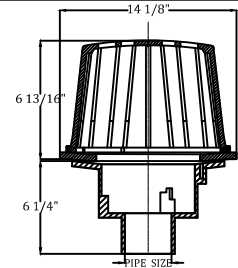
MATERIAL

Body - Cast Iron

Grate - Ductile iron / Aluminium

Dimensions

Catalogue Number	Outlet Size
RD-601 P D	2, 3, 4, 5, 6"



RD-602

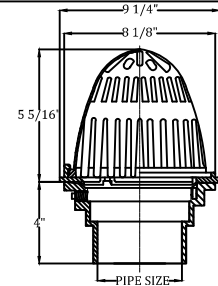
MATERIAL

Body - Cast Iron

Grate - Ductile iron / Aluminium

Dimensions

Catalogue Number	Outlet Size	Grate
RD-602 D I	2, 3, 4"	ductile iron
RD-602 A	2, 3, 4"	aluminium



RD-603

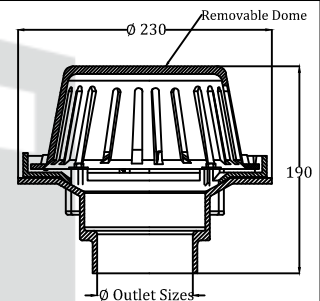
MATERIAL

Body - Cast Iron

Clamp & Dome- Aluminium

Dimensions

Model No:	Outlet Size (mm)	Outlet Type	Water Way Area (mm ²)
RD 603 A ₂	50	No Hub	19700
RD 603 A ₃	75	No Hub	19700
RD 603 A ₄	110	No Hub	19700



RD-603

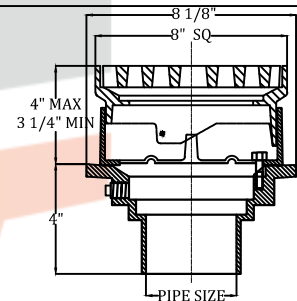
MATERIAL

Body - Cast Iron

Clamp & Dome- Aluminium

Dimensions

Model No:	Outlet Size (mm)	Outlet Type	Water Way Area (mm ²)
RD 603 A ₂	50	No Hub	19700
RD 603 A ₃	75	No Hub	19700
RD 603 A ₄	110	No Hub	19700



RD - 50

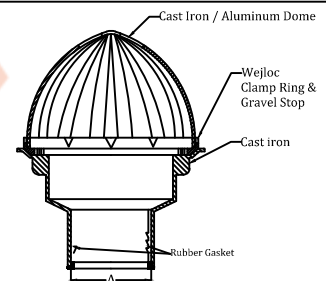
MATERIAL

Body - Cast Iron

Dome-Aluminium / Cast Iron

Dimensions

Model No:	Outlet (ID) (A) min
RD-50	50Ø (2")
RD-75	75Ø (3")
RD-100	110Ø (4")



RD-604

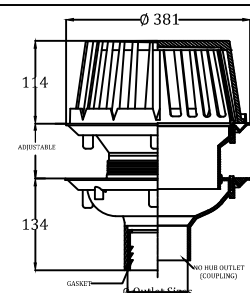
MATERIAL

Body & Extension - Cast Iron

Clamp & Dome-Cast Iron/
Nickel Bronze

Dimensions

Model No:	Outlet Size (mm)	Outlet Type	Water Way Area (mm ²)
RD 604 A ₃	75	Gasket / Spigot	83000
RD 604 A ₄	110	Gasket / Spigot	83000
RD 604 A ₅	160	Gasket / Spigot	83000



Roof Drains - RD-601 SERIES



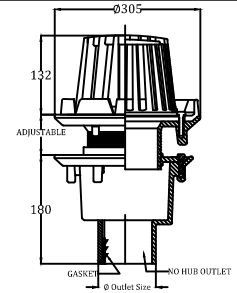
RD-605

MATERIAL

Body - Cast Iron
Clamp & Dome-Cast Iron / NB
Extension & Sleeve-Cast Iron

Dimensions

Model No:	Outlet Size (mm)	Outlet Type	Water Way Area (mm ²)
RD 605 A ₂	50	No Hub/Gasket	46100
RD 605 A ₃	75	No Hub/Gasket	46100
RD 605 A ₄	110	No Hub/Gasket	46100
RD 605 A ₆	160	No Hub/Gasket	46100



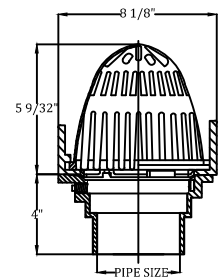
ORD-607

MATERIAL

Body - Cast Iron
Dome-Aluminium

Dimensions

Catalogue Number	Outlet Size
ORD-607 E	2, 3, 4"



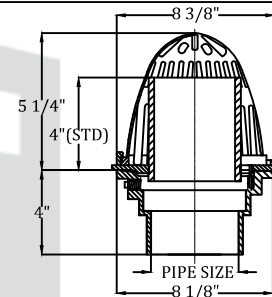
ORD-607

MATERIAL

Body - Cast Iron
Dome-Aluminium

Dimensions

Catalogue Number	Outlet Size
ORD-607 I	2, 3, 4"



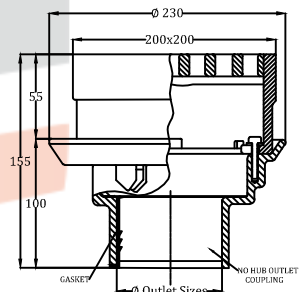
RD-613

MATERIAL

Body - Cast Iron
Clamp/ Frame - Cast Iron
Grate- Ductile Iron / Cast Iron

Dimensions

Model No:	Outlet Size (mm)	Water Way Area (mm ²)
RD 613 DI ₂	50	17300
RD 613 DI ₃	75	17300
RD 613 DI ₄	110	17300



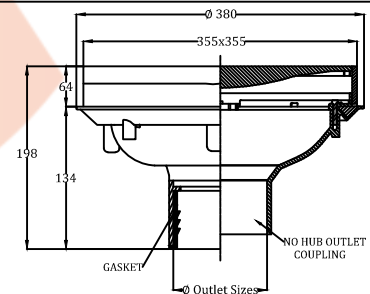
RD -614

MATERIAL

Body - Cast Iron
Clamp/ Frame - Cast Iron
Grate- Ductile Iron / Cast Iron

Dimensions

Model No:	Outlet Size (mm)	Water Way Area (mm ²)
RD 614 D I ₃	75	50200
RD 614 D I ₄	110	50200
RD 614 D I ₆	160	50200



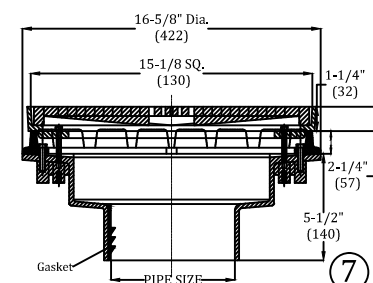
RD-615

MATERIAL

Body- Cast Iron
Strainer-Ductile Iron / Nickel Bronze

Dimensions

Catalogue Number	Outlet Size	Grate
RD-615 D I	2, 3, 4, 5, 6"	ductile iron
RD-615 N B	2, 3, 4, 5, 6"	nickel bronze



Roof Drains - RD-601 SERIES



SD-701

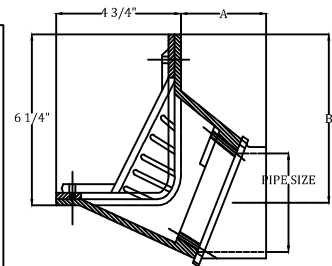
MATERIAL

Body - Cast Iron

Strainer - Ductile iron / Aluminium

Dimensions

Catalogue Number	Outlet Size	SD-701				
		NH		THD		
		A	B	A	B	
SD-701-L ₂	50mm	2"	5-1/8	6-1/2	2-3/4	6
SD-701-L ₃	75mm	3"	4-1/2	5-3/4	2-3/4	5-3/8
SD-701-L ₄	110mm	4"	4	5-1/8	2-3/4	4-7/8



SD-704

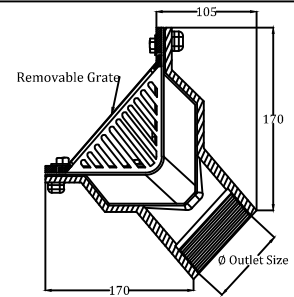
MATERIAL

Body - Cast Iron

Clamp & Grate - Aluminium /
Nickel Bronze

Dimensions

Model No:	Outlet Size (mm)	Outlet Type	Water Way Area (mm ²)
SD 704 V ₂	50	Threaded	21000
SD 704 V ₃	75	Threaded	21000
SD 704 V ₄	110	Threaded	21000



VC-802

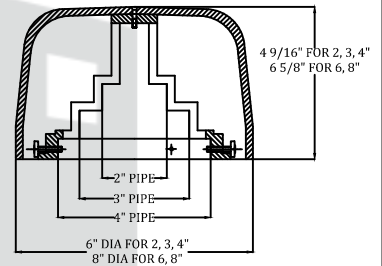
MATERIAL

Body - Cast Iron

Coupling - Cast Iron

Dimensions

Catalogue Number	Outlet Size
VC 802	2"
VC 803	3"
VC 804	4"
VC 806	6"
VC 808	8"



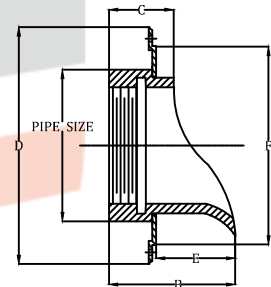
DS-902

MATERIAL

Body & Collar - Brass / Cast Iron

Dimensions

Catalogue Number	Outlet Size
DS-902	2"
DS-903	3"
DS-904	4"
DS-905	5"
DS-906	6"
DS-908	8"
DS-910	10"
DS-912	12"



GD-1301

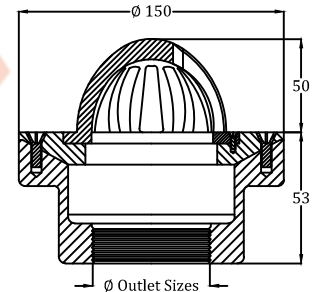
MATERIAL

Body - Cast Iron

Clamp & Strainer - Nickel Bronze

Dimensions

Model No:	Outlet Size (inch)	Outlet Type	Water Way Area (mm ²)
GD 1301 D ₂	2"	Threaded	7500
GD 1301 D ₃	3"	Threaded	7500



PS-1364

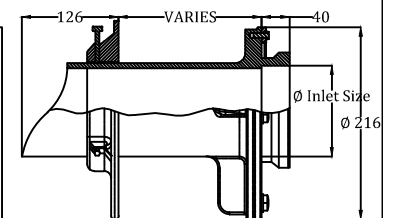
MATERIAL

Body & Collar - Cast Iron

Clamp & Wall Flange - Cast Iron

Dimensions

Model No:	Outlet Size (inch)	Outlet Type
PS 1364	4"	Hub Type



Floor Cleanouts - FC-460 SERIES



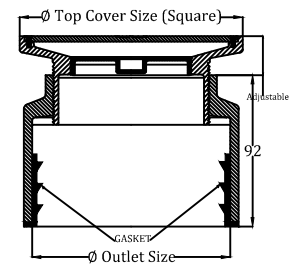
FC-460

MATERIAL

Body - Cast Iron
Top & Plug-Nickel Bronze / Stainless Steel

Dimensions

Model No:	Outlet Size (mm)	Outlet Type	Top Cover Size
FC 460 S ₂	50 mm	Gasket	100mm x 100mm
FC 460 S ₃	75 mm	Gasket	115mm ² x 150mm ²
FC 460 S ₄	110 mm	Gasket	125 or 150 or 200 mm ²
FC 460 S ₅	160 mm	Gasket	150mm ² / 200mm ²



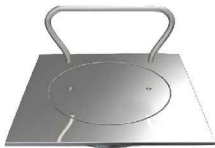
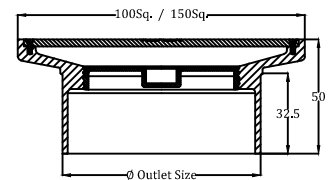
FC-460

MATERIAL

Body - Nickel Bronze / Stainless Steel
Cover & Plug-Nickel Bronze / Stainless Steel

Dimensions

Model No:	Outlet Size (mm)	Outlet Type	Top Cover Size
FC 460 H S R ₂	50mm	Hub Type	150 mm
FC 460 H S R ₃	75mm	Hub Type	150 mm
FC 460 H S R ₄	110mm	Hub Type	150 mm



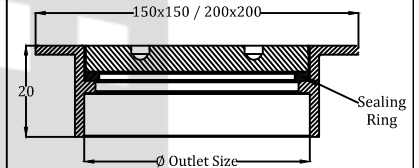
FC-460

MATERIAL

Body & Cover- Brass/Stainless Steel / Nickel Bronze
Key -Galvanized

Dimensions

Model No:	Outlet Size (mm)	Outlet Type	Top Cover Size
FC 460 H T ₃	75mm	Hub Type	150 mm
FC 460 H T ₃₋₂₀	110mm	Hub Type	200 mm
FC 460 H T ₄₋₁₅	110mm	Hub Type	150 mm



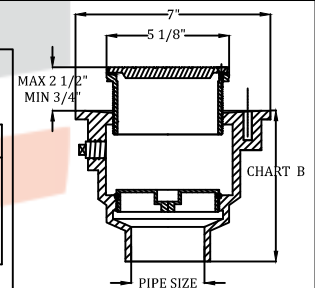
FC-1012 AR

MATERIAL

Body - Cast Iron / Ductile Iron
Strainer - Nickel Bronze

Dimensions

Chart A			Chart B			
Catalogue No:	Outlet Size	Grate	Pipe Size	NH	Push-On	PVS / ABS
FCO 1012 A R ₂	2"	Nickel Bronze	2"	4-3/4"	5-1/2"	4"
FCO 1012 A R ₃	3"	Nickel Bronze	3"	4-3/4"	5-1/2"	4"
FCO 1012 A R ₄	4"	Nickel Bronze	4"	4-3/4"	5-1/2"	4"



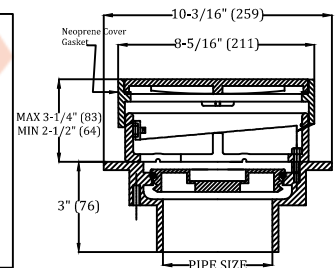
FC-1015 AR

MATERIAL

Body - Cast Iron / Ductile Iron
Cover- Ductile Iron/NB

Dimensions

Catalogue Number	Pipe Size	Cover
FCO-1015 D I A R	3, 4, 6, 8"	ductile iron
FCO-1015 A N B R	3, 4, 6, 8"	nickel bronze
FCO-1015 A N B S	3, 4, 6, 8"	sq. nickel bronze



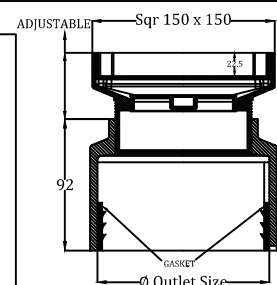
FC-1020 RS

MATERIAL

Body - Cast Iron
Top & Plug-Nickel Bronze

Dimensions

Model No:	Outlet Size (mm)	Top Cover Size
FCO-1020 R S ₄	110 mm	150mm
FCO-1020 R S ₆	160 mm	150mm



Floor Cleanouts - FC-460 SERIES



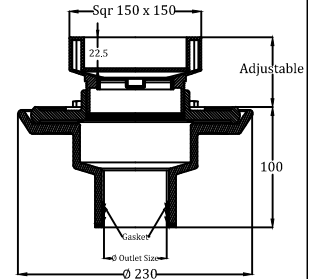
FCO-1021

MATERIAL

Body - Cast Iron
Top & Plug-Nickel Bronze

Dimensions

Model No:	Outlet Size (mm)	Top Cover Size
FCO 1021 R S ₂	50 mm	150mm
FCO 1021 R S ₃	75 mm	150mm
FCO 1021 R S ₄	110 mm	150mm



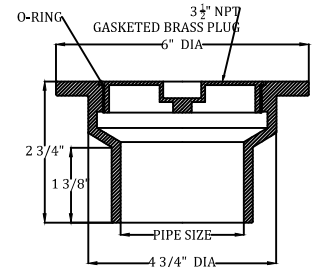
GCO-102

MATERIAL

Body - Cast Iron/Stainless Steel
Cover -Ductile Iron/ Brass

Dimensions

Catalogue Number	Pipe Size
GCO 102	2"
GCO 103	3"
GCO 104	4"
GCO 106	6"



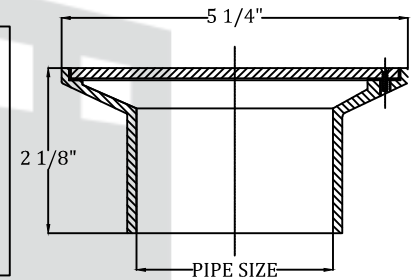
GCO-107

MATERIAL

Body - Cast Iron / Ductile Iron
Cover-Stainless Steel/ Nickel Bronze

Dimensions

Catalogue Number	Pipe Size	Cover
GCO-107 D 1 2	2"	ductile iron
GCO-107 D 1 3	3"	ductile iron
GCO-107 D 1 4	4"	ductile iron
GCO-107 N B 2	2"	nickel bronze
GCO-107 N B 3	3"	nickel bronze
GCO-107 N B 4	4"	nickel bronze



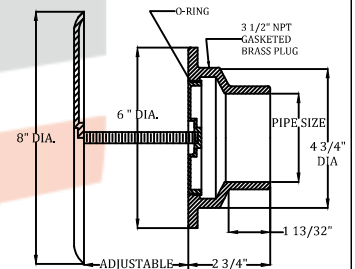
WCO 1042

MATERIAL

Body - Cast Iron / Ductile Iron
Cover-Stainless Steel

Dimensions

Catalogue Number	Pipe Size	Cover Size
WCO 1042 SS F ₂	2"	8"
WCO 1042 SS F ₃	3"	8"
WCO 1042 SS F ₄	4"	8"
WCO 1042 SS F ₆	6"	8"



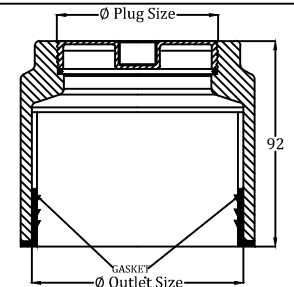
ACO-1113 P

MATERIAL

Body - Cast Iron
Plug-Nickel Bronze / Stainless Steel
Seal-Rubber

Dimensions

Model No:	Outlet Size (mm)	Top Cover Size
ACO 1113 P ₃	75 mm	2.0" BSP
ACO 1113 P ₄	110 mm	3.5" BSP
ACO 1113 P ₆	160 mm	5" BSP / 5.5



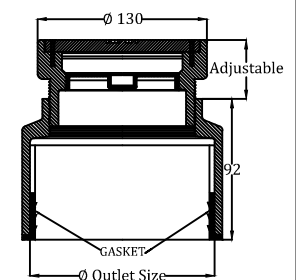
ACO 1113

MATERIAL

Body & Top - Cast Iron
Plug-Nickel Bronze/
Stainless Steel

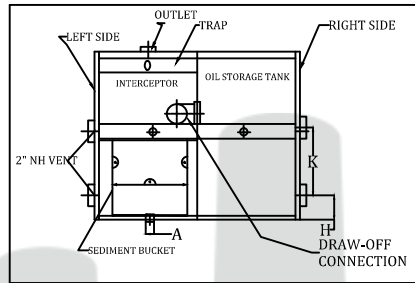
Dimensions

Model No:	Outlet Size (mm)	Top Cover Size
ACO 1113 A ₄	110 mm	130mm
ACO 1113 A ₆	160 mm	130mm

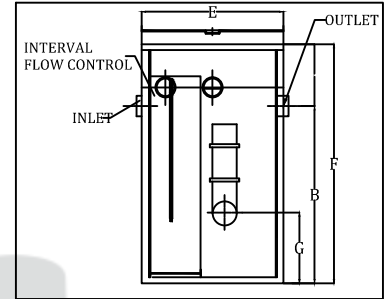


Oil Interceptors - O I - S T SERIES

Interceptors with Storage Tank

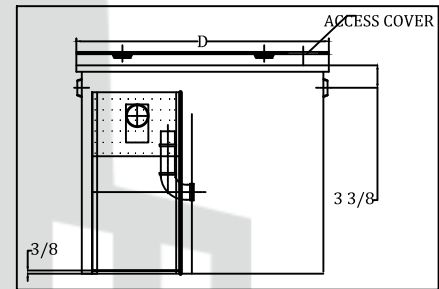


TOP VIEW



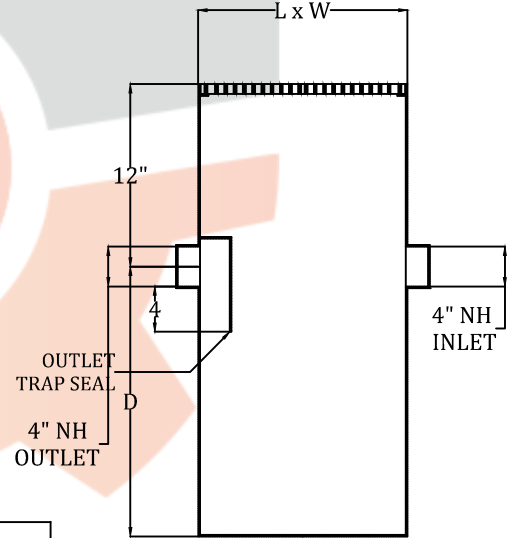
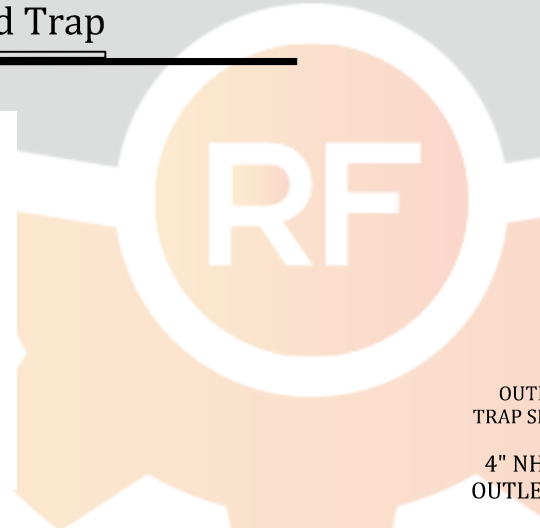
SIDE VIEW

Interceptor Catalogue Number	Flow Rate GPM	Combined Volume Gal.	A Inlet & Outlet	B Base to Center	C Top to Center	D Length	E Width	F Height	G	H	K	J
OI-ST 10	10	15	2"	8-1/2"	6"	24"	18"	14-1/2"	3"	4-1/2"	5-1/2"	6"
OI-ST 15	15	22	2"	12-1/2"	6"	33-3/4"	20-7/8"	18-1/2"	5"	4-1/2"	7-1/2"	9"
OI-ST 20	20	32	3"	14-1/2"	6"	39-3/4"	20-7/8"	20-1/2"	6"	4-1/2"	7-1/2"	10-1/2"
OI-ST 25	25	35	3"	16-1/2"	6"	39-3/4"	20-7/8"	22-1/2"	7"	4-1/2"	7-1/2"	10-1/2"
OI-ST 35	35	65	4"	14-1/2"	6"	49-3/4"	32-7/8"	20-1/2"	6"	12"	6"	13"
OI-ST 50	50	78	4"	18-1/2"	6"	49-3/4"	32-7/8"	24-1/2"	8"	12"	6"	13"
OI-ST 75	75	214	4"	26-1/2"	6"	49-3/4"	40-7/8"	32-1/2"	16"	12"	12"	13"
OI-ST 100	100	303	4"	26-1/2"	9-1/2"	90"	58"	36"	20-1/2"	15"	20-1/2"	22-1/2"
OI-ST 150	150	358	4"	30"	14"	76"	66"	44"	24"	17"	24"	19"
OI-ST 200	200	453	4"	30-1/2"	17-1/2"	90"	73-1/4"	48"	24-1/2"	18"	25"	22-1/2"
OI-ST 250	250	590	6"	35-1/2"	15-1/2"	90"	73-1/4"	51"	29-1/2"	18"	25"	22-1/2"
OI-ST 300	300	816	6"	36-1/2"	15-1/2"	86"	94-7/8"	52"	29-1/2"	23-1/2"	33"	21-1/2"
OI-ST 350	350	1068	6"	43-1/2"	16-1/2"	94"	100-7/8"	60"	36-1/2"	24"	35"	23-1/2"
OI-ST 400	400	1111	6"	43"	17"	91"	100-7/8"	60"	36"	26"	38"	22-3/4"
OI-ST 500	500	1242	6"	46"	20"	83"	118-7/8"	66"	39"	30"	42"	20-3/4"



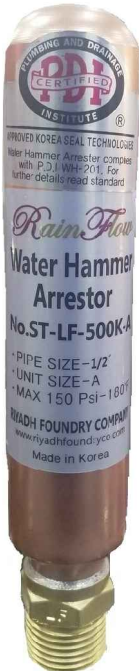
ELEVATION

Interceptors with Sand Trap



Interceptor Catalogue Number	Flow Rate GPM	Inlet & Outlet	L Length	W Width	D	Capacity Gal.	No. of Grates
OI-20-ST	20	4"	24"	24"	26"	60	2
OI-50-ST	50	4"	48"	24"	26"	120	4
OI-150-ST	150	4"	48"	48"	38"	360	8
OI-250-ST	250	4"	72"	48"	39"	540	12
OI-500-ST	500	4"	120"	48"	51"	1200	20

Copper Water Hammer Arrestors-WHA 1101



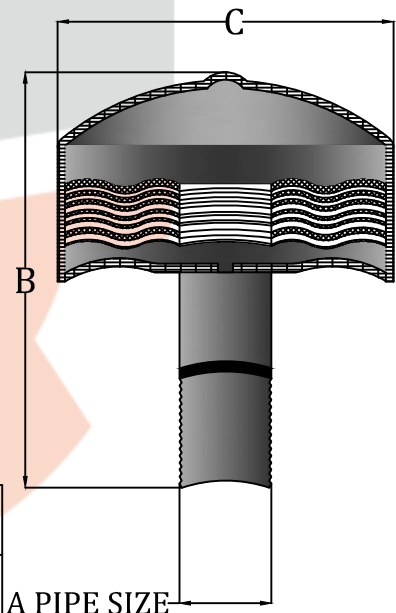
Technical Data

Catalog No:	Connection Threaded.	Dimensions				PDI Size	Fixtures Units
		A		B			
		in.	mm	in.	mm		
WHA-1101	1/2"	1 1/8	28.5	5 15/16	150.9	A	1-11
WHA-1102	3/4"	1 3/8	34.9	8 9/16	218.0	B	12-32
WHA-1103	1"	1 5/8	41.3	8 13/16	223.5	C	33-60
WHA-1104	1"	2 1/8	54.0	9 15/16	252.5	D	61-113
WHA-1105	1"	2 1/8	54.0	12 11/16	322.5	E	114-154
WHA-1106	1"	28.5	66.7	11 5/32	283.5	F	155-330

Stainless Steel Shock Absorber-SA 1201



Catalogue Number	PDI Size	Conn. Size	Height
SA-1201 SS	A	3/4"	3-1/4"
SA-1202 SS	B	1"	4-1/4"
SA-1203 SS	C	1"	5-3/4"
SA-1204 SS	D	1"	6-1/2"
SA-1205 SS	E	1"	6-3/4"
SA-1206 SS	F	1"	7-1/4"



Technical Data

	SA-1201 SS	SA-1202 SS	SA-1203 SS	SA-1204 SS	SA-1205 SS	SA-1206 SS
Fixture Unit	1-11	12-32	33-60	61-113	114-154	155-330
"A" connection	3/4" (19)	1" (25)	1" (25)	1" (25)	1" (25)	1" (25)
"B" height	3-3/16" (81)	4" (102)	4-5/16" (110)	5-1/4" (133)	7" (178)	7" (178)
"C" diameter	3-1/4" (83)	3-1/4" (83)	3-1/4" (83)	3-1/4" (83)	3-1/4" (83)	3-1/4" (83)
PDI Size	A	B	C	D	E	F

SELECTION OF ROOF OUTLETS

The purpose of roof outlets are to provide effective drainage of rain water. The selection of roof outlets are usually the responsibility of the concerned engineer conversant with the roof construction, finishing, drainage system and designated function.

Following factors to be considered while selecting roof outlets;

BUILDING REGULATION AND STANDARDS

National and local regulations and standards must be complied with matters concerning drainage of rainwater.

ROOF CONSTRUCTION

Roof outlets are not multipurpose. Versions are designed for use with specific types of roofs. The depth of roof slab, thickness and location of insulation and the type and location of water proofing membrane are to be considered.

FLOW RATE

The quantity and types of roof outlet to be used in a given application must be related to the roof area and expected volume of rain water to be drained.

Flow rate is the amount of water of a roof outlet will be drain at a given head, it is influenced by several factors such as grating free area, sump capacity, design of roof outlet, outlet size and accessories as gravel guards and sediment buckets.

GRATE FREE AREA

Drains should be specified with sufficient grate free area and outlet size to pass anticipated flow. For standard indoor applications, the grate free area should be 1-1/2 times the transverse area of the connecting pipe.

AVAILABILITY

Most of the items are kept in stock. However, certain items are not keep in stock but shall arrange within 60-90 days from the date of contract.